

<b>Participant #</b>	
For Researchers Only	

**Participant Survey Questionnaire:  
PNWD-IAI Special Research Project – Recognizing Distortion**

*The following information is requested to assist the researchers in recognizing any potential correlations between demographics and accuracy in recognizing distortion in latent prints.*

**DEMOGRAPHIC QUESTIONNAIRE:**

1. What is your primary discipline?  
 Latent processing/CSI       Comparisons       Student       Non-forensics  
 Other \_\_\_\_\_
  
2. If you are a latent print examiner (LPE), how many years have you been comparing impressions?  
 \_\_\_\_\_
  
3. Are you a Certified Latent Print Examiner?  
 Yes       No       N/A – Non-forensics
  
4. What type of organization do you work for?  
 City       County       State       Federal       Private       N/A – Non-forensics
  
5. Do you work for an accredited agency?  
 Yes       No       N/A – Non-forensics
  
6. Did you complete a formal training program?  
 Yes       No       N/A – Non-forensics
  
- 6a. If Yes, how long was your formal training?  
 18-24 months  
 12-18 months  
 6-12 months  
 Less than 6 months
  
- 6b. If No, describe how you trained \_\_\_\_\_  
 \_\_\_\_\_  
 \_\_\_\_\_
  
7. Have you had training in recognizing distortion in latent prints?  
 Yes       No  
 If Yes:  Formal       Informal       Total number of Hours \_\_\_\_\_
  
8. How do you perform your comparison work?  
 On the glass       On the computer with a program like Photoshop       Combination  
 Other \_\_\_\_\_       N/A – Non-forensics
  
9. During analysis, does your agency require you to assign possible anatomical region(s) and orientation(s) to each suitable latent print?  
 Yes       No       N/A – Non-forensics
  
- 9a. If Yes, how is this documented (check all that apply)?  
 Symbols       Annotations (GYRO or other)  
 Text  
 Embedded images

<b>Participant #</b>	
<b>For Researchers Only</b>	

10. During analysis, do you utilize worksheets to capture information about the latent prints?

- Yes       No       N/A – Non-forensics

10a. If Yes, does the worksheet include (check all that apply)?

- Check boxes  
 Free text  
 Embedded images  
 Other \_\_\_\_\_

11. During analysis, does your agency require mark-up of feature sets used to support suitability decisions (e.g., GYRO)?

- Yes       No       Sometimes       N/A – Non-forensics

11a. If feature mark-up is only required “sometimes”, please explain the conditions to include feature mark-up.

---



---



---

12. If your agency does not require feature mark-up during analysis, do you choose to document the feature set used to support suitability decisions?

- Yes       No       Sometimes       N/A – Non-forensics

12a. If sometimes, please explain the conditions under which you would include feature mark-up.

---



---



---

13. Does your agency verify all suitability decisions and source conclusions (100% verification)?

- Yes       No       N/A – Non-forensics

14. Does your agency have a conflict resolution policy?

- Yes       No       N/A – Non-forensics

15. In your own words describe what distortion is

---



---



---



---



---

16. Describe how critical distortion is to your suitability decision making

---



---



---



---



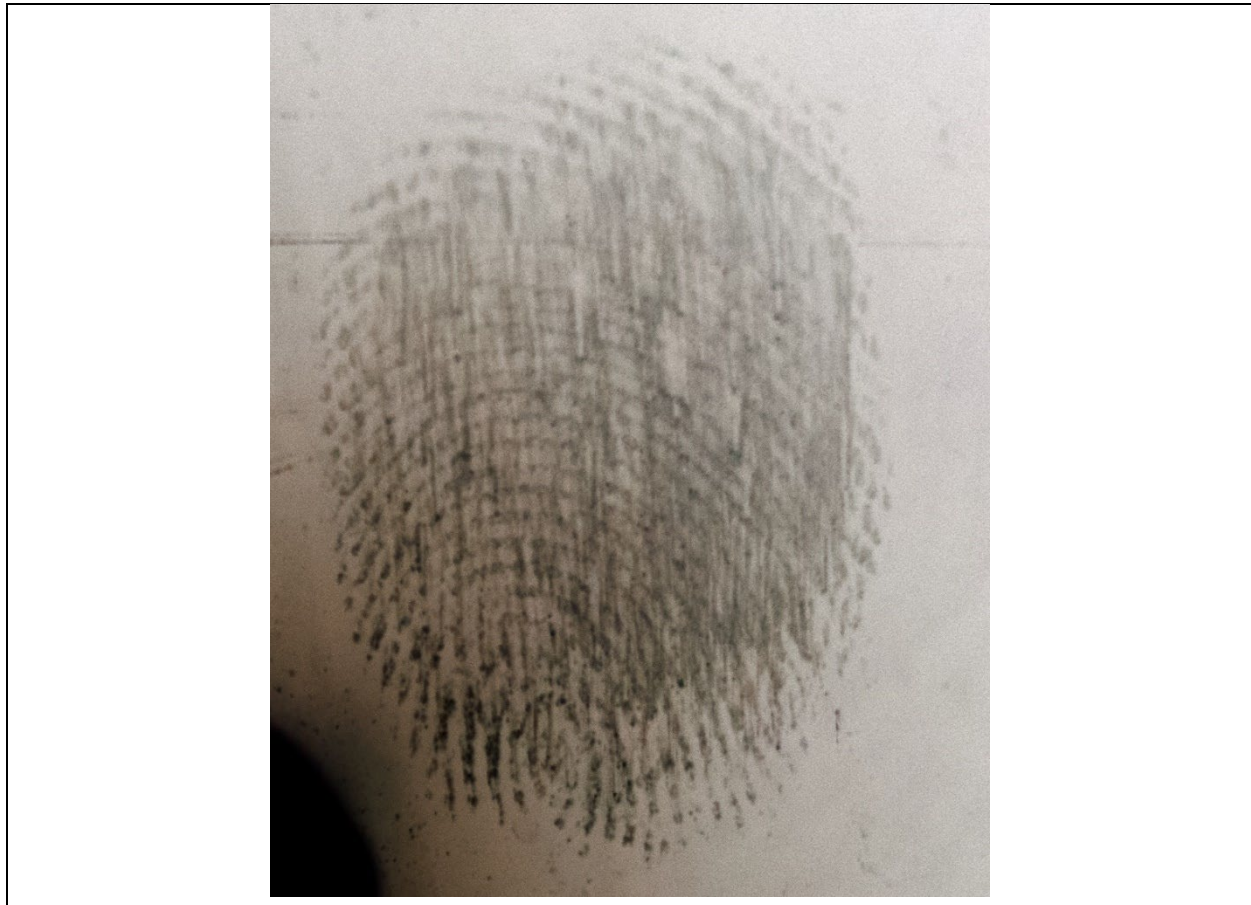
---



---

Participant #	
For Researchers Only	

P1

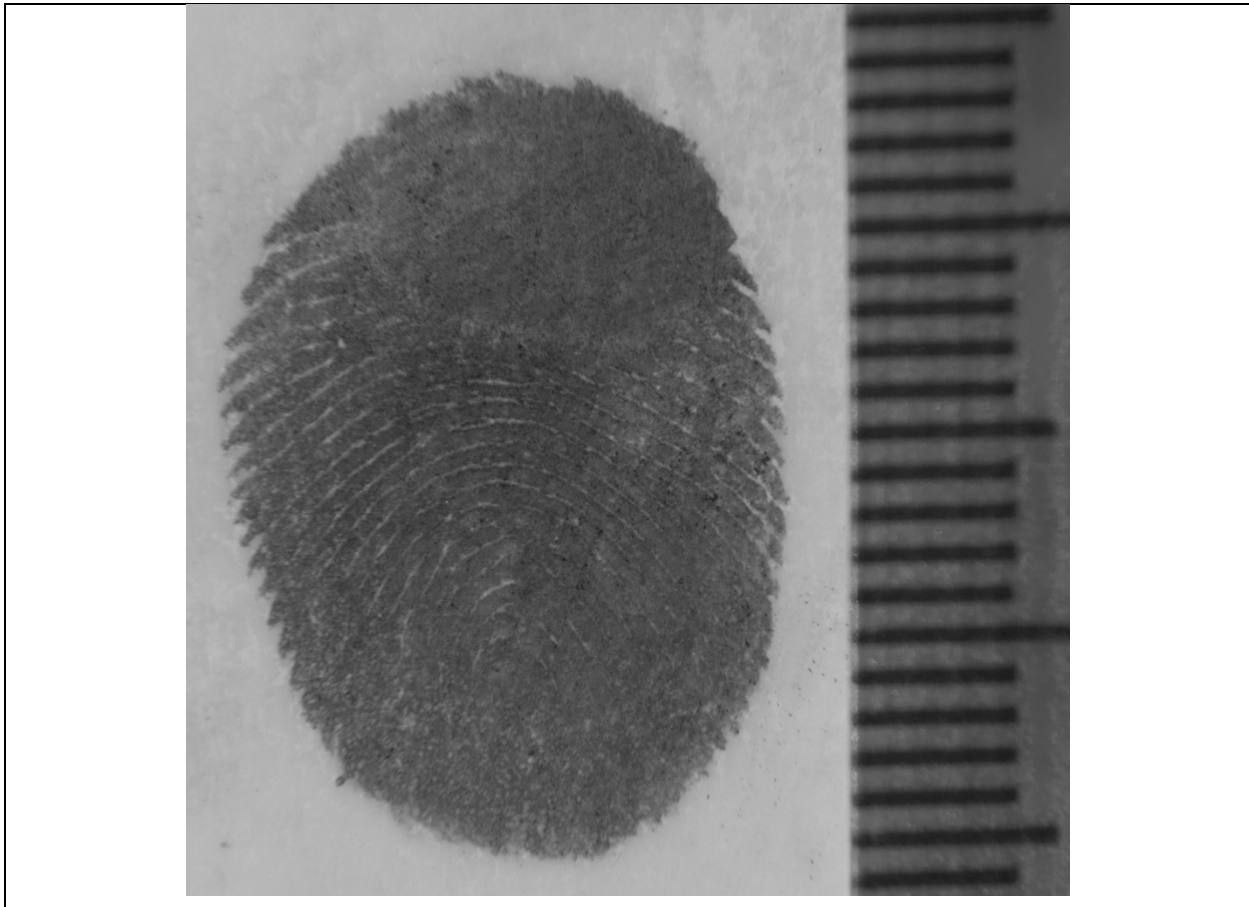


*See Digital Image for Analysis Purposes if Needed*

- Overall Latent Difficulty Level  
 Low       Medium       Hard
- Latent Complexity Assessment  
 1 (highly complex)       2 (moderately complex)       3 (neutral complexity)  
 4 (moderately non-complex)       5 (non-complex)
- Type of Distortion Observed (**choose one, the most appropriate**)  
 Right Twist       Upward Movement       Double Tap       Double Touch  
 Left Twist       Left Movement       Right Movement       Downward Movement  
 Wobble       Development Medium       Background Noise       Unknown
- What level of pressure is observed  
 Heavy Pressure       Medium Pressure       Light Pressure
- Is this latent print reminiscent of casework (if you are an LPE)  
 Yes       No       N/A – not an LPE  
 Explain \_\_\_\_\_
- Would this latent print trigger additional quality control measures in your agency  
 Yes       No       N/A – not an LPE  
 Why \_\_\_\_\_
- Is this latent print suitable for the following  
 Preservation on evidence       Progressing to analysis phase       Comparison  
 Unknown (not examiner) \_\_\_\_\_

Participant #	
For Researchers Only	

P2



*See Digital Image for Analysis Purposes if Needed*

1. Overall Latent Difficulty Level  
 Low       Medium       Hard
2. Latent Complexity Assessment  
 1 (highly complex)       2 (moderately complex)       3 (neutral complexity)  
 4 (moderately non-complex)       5 (non-complex)
3. Type of Distortion Observed (**choose one, the most appropriate**)  
 Right Twist       Upward Movement       Double Tap       Double Touch  
 Left Twist       Left Movement       Right Movement       Downward Movement  
 Wobble       Development Medium       Background Noise       Unknown
4. What level of pressure is observed  
 Heavy Pressure       Medium Pressure       Light Pressure
5. Is this latent print reminiscent of casework (if you are an LPE)  
 Yes       No       N/A – not an LPE  
 Explain \_\_\_\_\_
6. Would this latent print trigger additional quality control measures in your agency  
 Yes       No       N/A – not an LPE  
 Why \_\_\_\_\_
7. Is this latent print suitable for the following  
 Preservation on evidence       Progressing to analysis phase       Comparison  
 Unknown (not examiner) \_\_\_\_\_

Participant #	
For Researchers Only	

P3

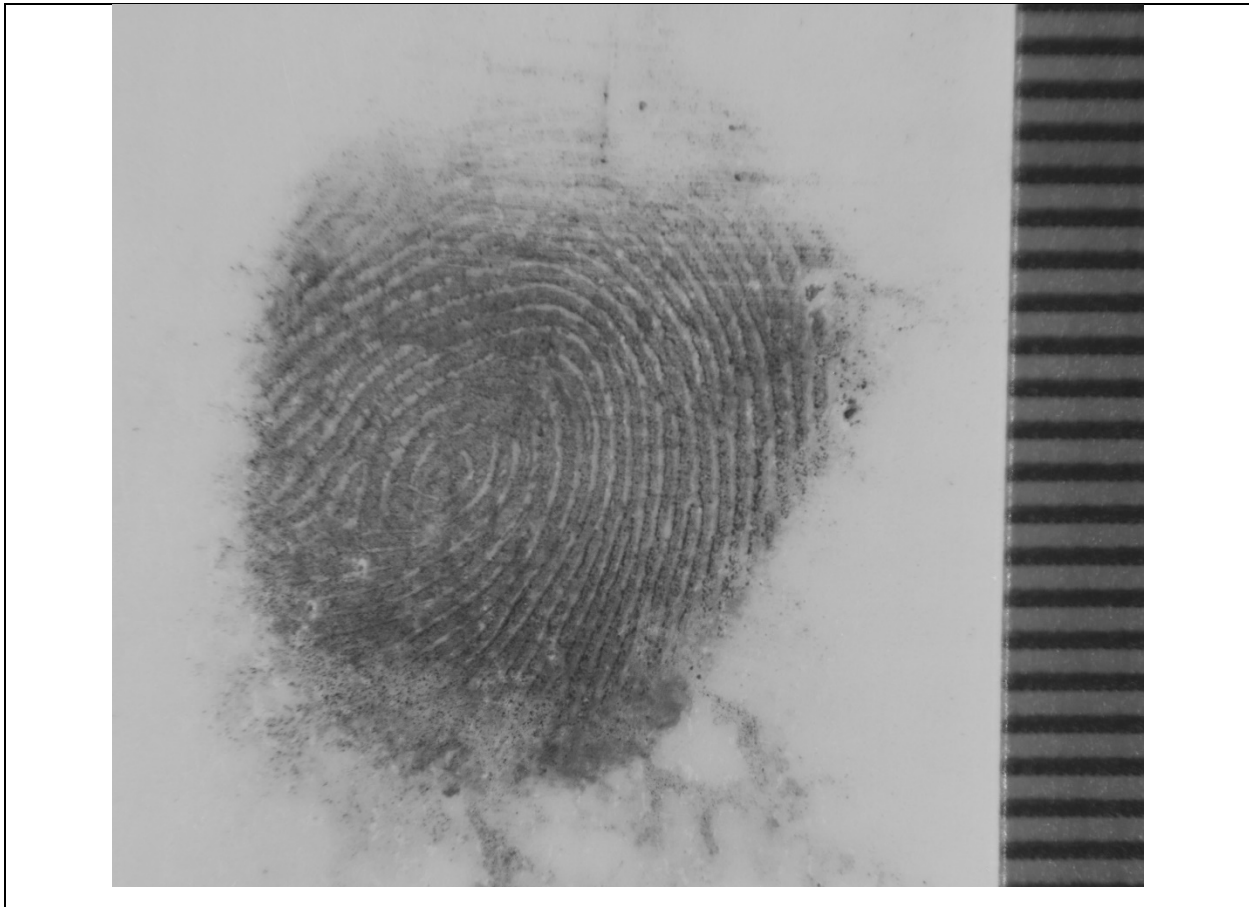


*See Digital Image for Analysis Purposes if Needed*

1. Overall Latent Difficulty Level  
 Low       Medium       Hard
2. Latent Complexity Assessment  
 1 (highly complex)       2 (moderately complex)       3 (neutral complexity)  
 4 (moderately non-complex)       5 (non-complex)
3. Type of Distortion Observed (**choose one, the most appropriate**)  
 Right Twist       Upward Movement       Double Tap       Double Touch  
 Left Twist       Left Movement       Right Movement       Downward Movement  
 Wobble       Development Medium       Background Noise       Unknown
4. What level of pressure is observed  
 Heavy Pressure       Medium Pressure       Light Pressure
5. Is this latent print reminiscent of casework (if you are an LPE)  
 Yes       No       N/A – not an LPE  
 Explain \_\_\_\_\_
6. Would this latent print trigger additional quality control measures in your agency  
 Yes       No       N/A – not an LPE  
 Why \_\_\_\_\_
7. Is this latent print suitable for the following  
 Preservation on evidence       Progressing to analysis phase       Comparison  
 Unknown (not examiner) \_\_\_\_\_

Participant #	
For Researchers Only	

P4



*See Digital Image for Analysis Purposes if Needed*

- Overall Latent Difficulty Level  
 Low       Medium       Hard
- Latent Complexity Assessment  
 1 (highly complex)       2 (moderately complex)       3 (neutral complexity)  
 4 (moderately non-complex)       5 (non-complex)
- Type of Distortion Observed (**choose one, the most appropriate**)  
 Right Twist       Upward Movement       Double Tap       Double Touch  
 Left Twist       Left Movement       Right Movement       Downward Movement  
 Wobble       Development Medium       Background Noise       Unknown
- What level of pressure is observed  
 Heavy Pressure       Medium Pressure       Light Pressure
- Is this latent print reminiscent of casework (if you are an LPE)  
 Yes       No       N/A – not an LPE  
 Explain \_\_\_\_\_
- Would this latent print trigger additional quality control measures in your agency  
 Yes       No       N/A – not an LPE  
 Why \_\_\_\_\_
- Is this latent print suitable for the following  
 Preservation on evidence       Progressing to analysis phase       Comparison  
 Unknown (not examiner) \_\_\_\_\_

Participant #	
For Researchers Only	

P5

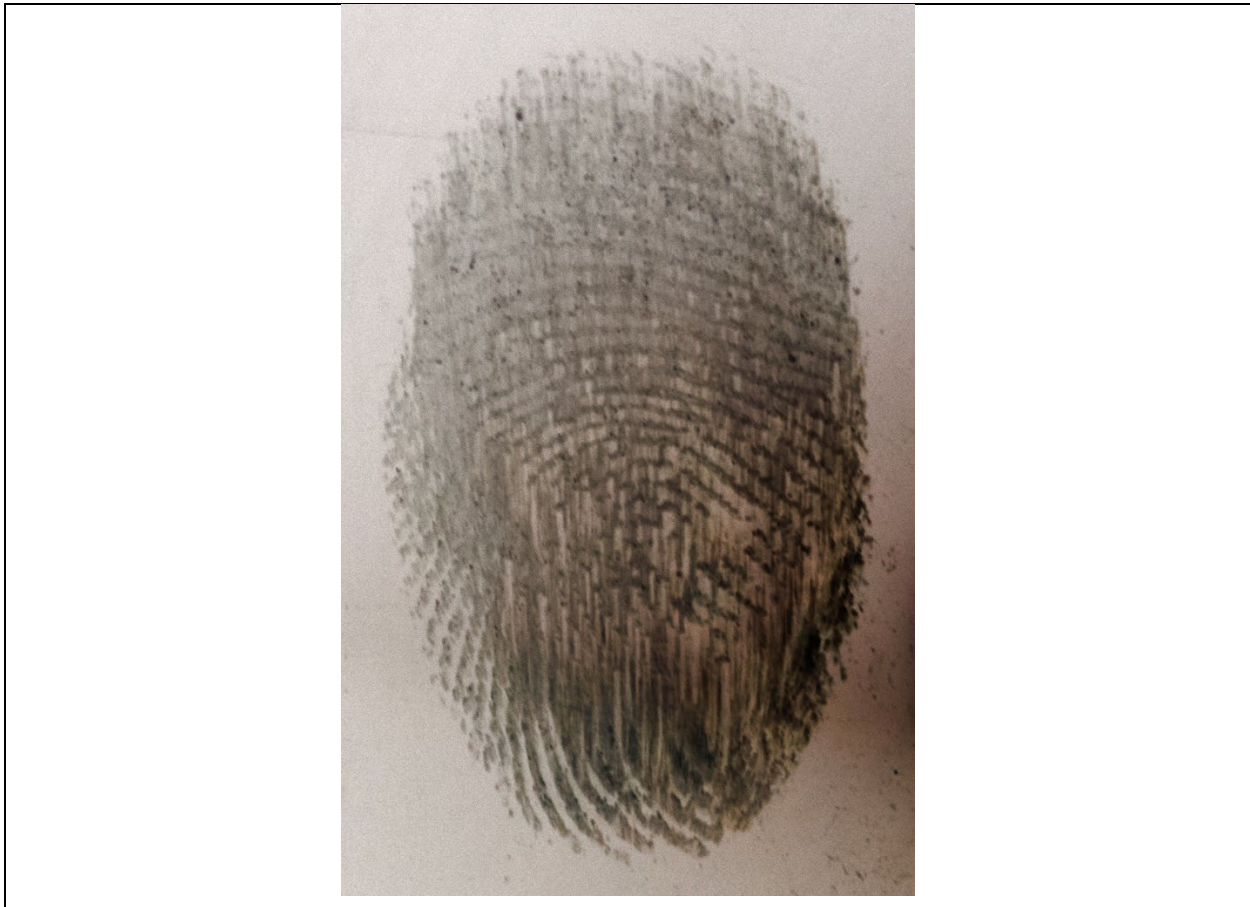


*See Digital Image for Analysis Purposes if Needed*

1. Overall Latent Difficulty Level  
 Low       Medium       Hard
2. Latent Complexity Assessment  
 1 (highly complex)       2 (moderately complex)       3 (neutral complexity)  
 4 (moderately non-complex)       5 (non-complex)
3. Type of Distortion Observed (**choose one, the most appropriate**)  
 Right Twist       Upward Movement       Double Tap       Double Touch  
 Left Twist       Left Movement       Right Movement       Downward Movement  
 Wobble       Development Medium       Background Noise       Unknown
4. What level of pressure is observed  
 Heavy Pressure       Medium Pressure       Light Pressure
5. Is this latent print reminiscent of casework (if you are an LPE)  
 Yes       No       N/A – not an LPE  
 Explain \_\_\_\_\_
6. Would this latent print trigger additional quality control measures in your agency  
 Yes       No       N/A – not an LPE  
 Why \_\_\_\_\_
7. Is this latent print suitable for the following  
 Preservation on evidence       Progressing to analysis phase       Comparison  
 Unknown (not examiner) \_\_\_\_\_

Participant #	
For Researchers Only	

P6



*See Digital Image for Analysis Purposes if Needed*

- Overall Latent Difficulty Level  
 Low       Medium       Hard
- Latent Complexity Assessment  
 1 (highly complex)       2 (moderately complex)       3 (neutral complexity)  
 4 (moderately non-complex)       5 (non-complex)
- Type of Distortion Observed (**choose one, the most appropriate**)  
 Right Twist       Upward Movement       Double Tap       Double Touch  
 Left Twist       Left Movement       Right Movement       Downward Movement  
 Wobble       Development Medium       Background Noise       Unknown
- What level of pressure is observed  
 Heavy Pressure       Medium Pressure       Light Pressure
- Is this latent print reminiscent of casework (if you are an LPE)  
 Yes       No       N/A – not an LPE  
 Explain \_\_\_\_\_
- Would this latent print trigger additional quality control measures in your agency  
 Yes       No       N/A – not an LPE  
 Why \_\_\_\_\_
- Is this latent print suitable for the following  
 Preservation on evidence       Progressing to analysis phase       Comparison  
 Unknown (not examiner) \_\_\_\_\_

Participant #	
For Researchers Only	

P7

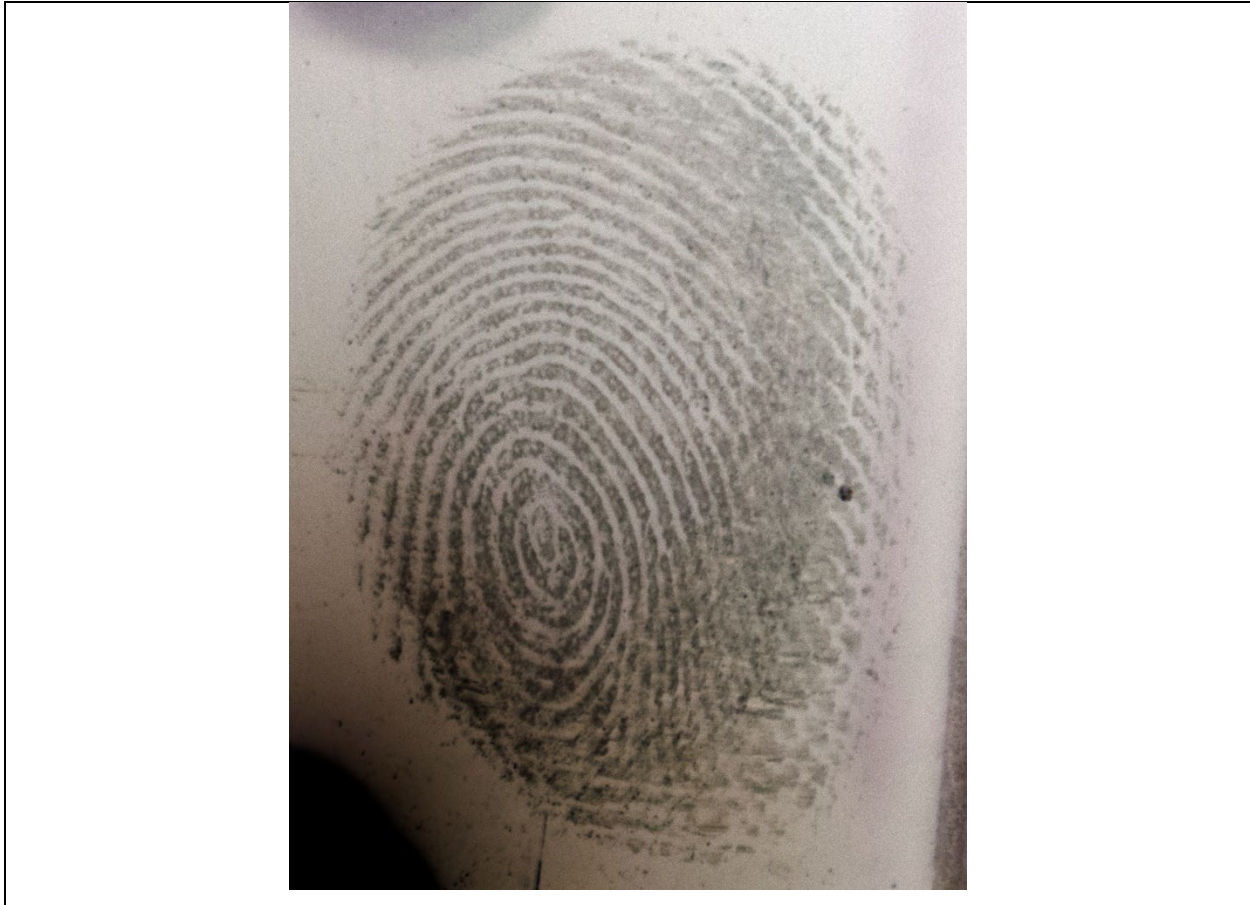


*See Digital Image for Analysis Purposes if Needed*

1. Overall Latent Difficulty Level  
 Low       Medium       Hard
2. Latent Complexity Assessment  
 1 (highly complex)       2 (moderately complex)       3 (neutral complexity)  
 4 (moderately non-complex)       5 (non-complex)
3. Type of Distortion Observed (**choose one, the most appropriate**)  
 Right Twist       Upward Movement       Double Tap       Double Touch  
 Left Twist       Left Movement       Right Movement       Downward Movement  
 Wobble       Development Medium       Background Noise       Unknown
4. What level of pressure is observed  
 Heavy Pressure       Medium Pressure       Light Pressure
5. Is this latent print reminiscent of casework (if you are an LPE)  
 Yes       No       N/A – not an LPE  
 Explain \_\_\_\_\_
6. Would this latent print trigger additional quality control measures in your agency  
 Yes       No       N/A – not an LPE  
 Why \_\_\_\_\_
7. Is this latent print suitable for the following  
 Preservation on evidence       Progressing to analysis phase       Comparison  
 Unknown (not examiner) \_\_\_\_\_

Participant #	
For Researchers Only	

P8

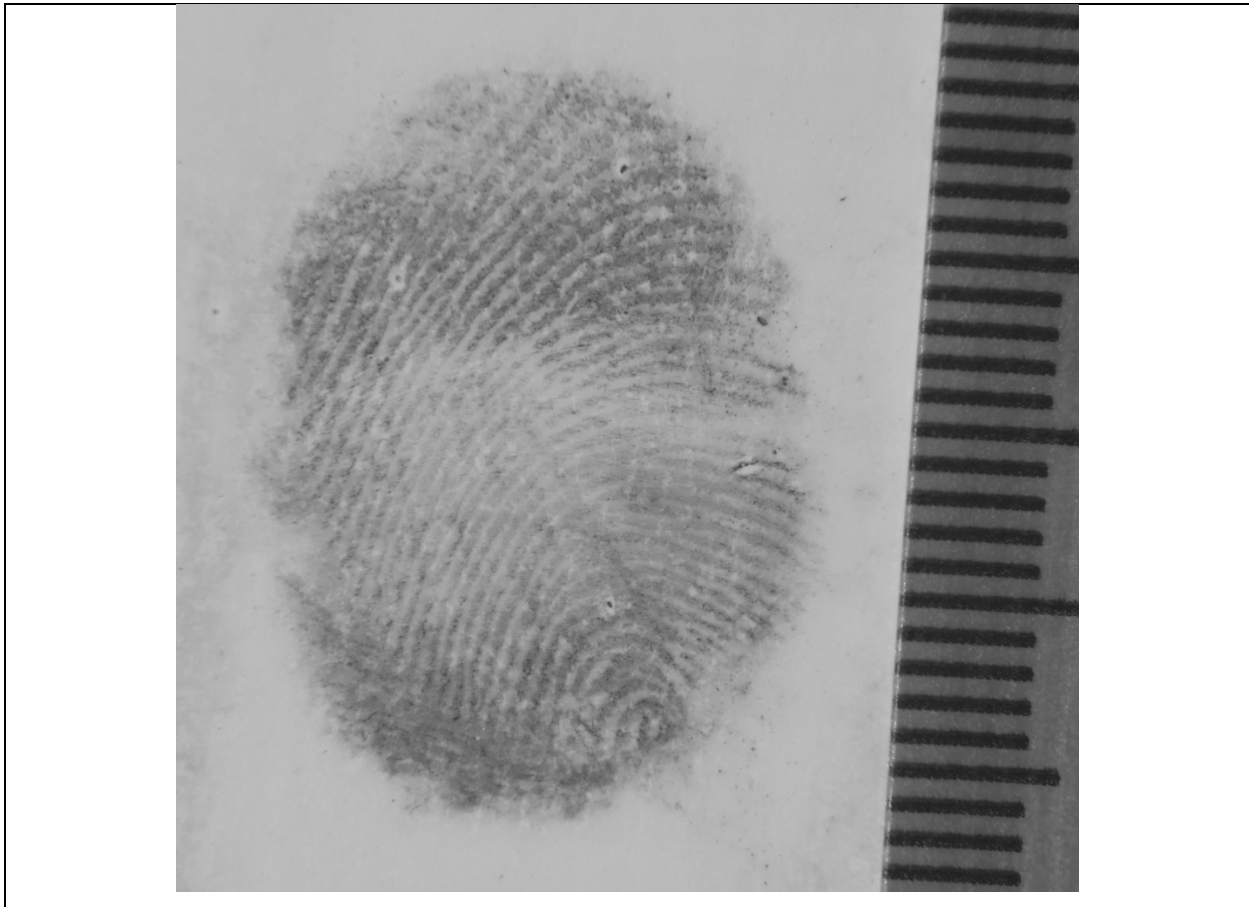


*See Digital Image for Analysis Purposes if Needed*

1. Overall Latent Difficulty Level  
 Low       Medium       Hard
2. Latent Complexity Assessment  
 1 (highly complex)       2 (moderately complex)       3 (neutral complexity)  
 4 (moderately non-complex)       5 (non-complex)
3. Type of Distortion Observed (**choose one, the most appropriate**)  
 Right Twist       Upward Movement       Double Tap       Double Touch  
 Left Twist       Left Movement       Right Movement       Downward Movement  
 Wobble       Development Medium       Background Noise       Unknown
4. What level of pressure is observed  
 Heavy Pressure       Medium Pressure       Light Pressure
5. Is this latent print reminiscent of casework (if you are an LPE)  
 Yes       No       N/A – not an LPE  
 Explain \_\_\_\_\_
6. Would this latent print trigger additional quality control measures in your agency  
 Yes       No       N/A – not an LPE  
 Why \_\_\_\_\_
7. Is this latent print suitable for the following  
 Preservation on evidence       Progressing to analysis phase       Comparison  
 Unknown (not examiner) \_\_\_\_\_

Participant #	
For Researchers Only	

P9

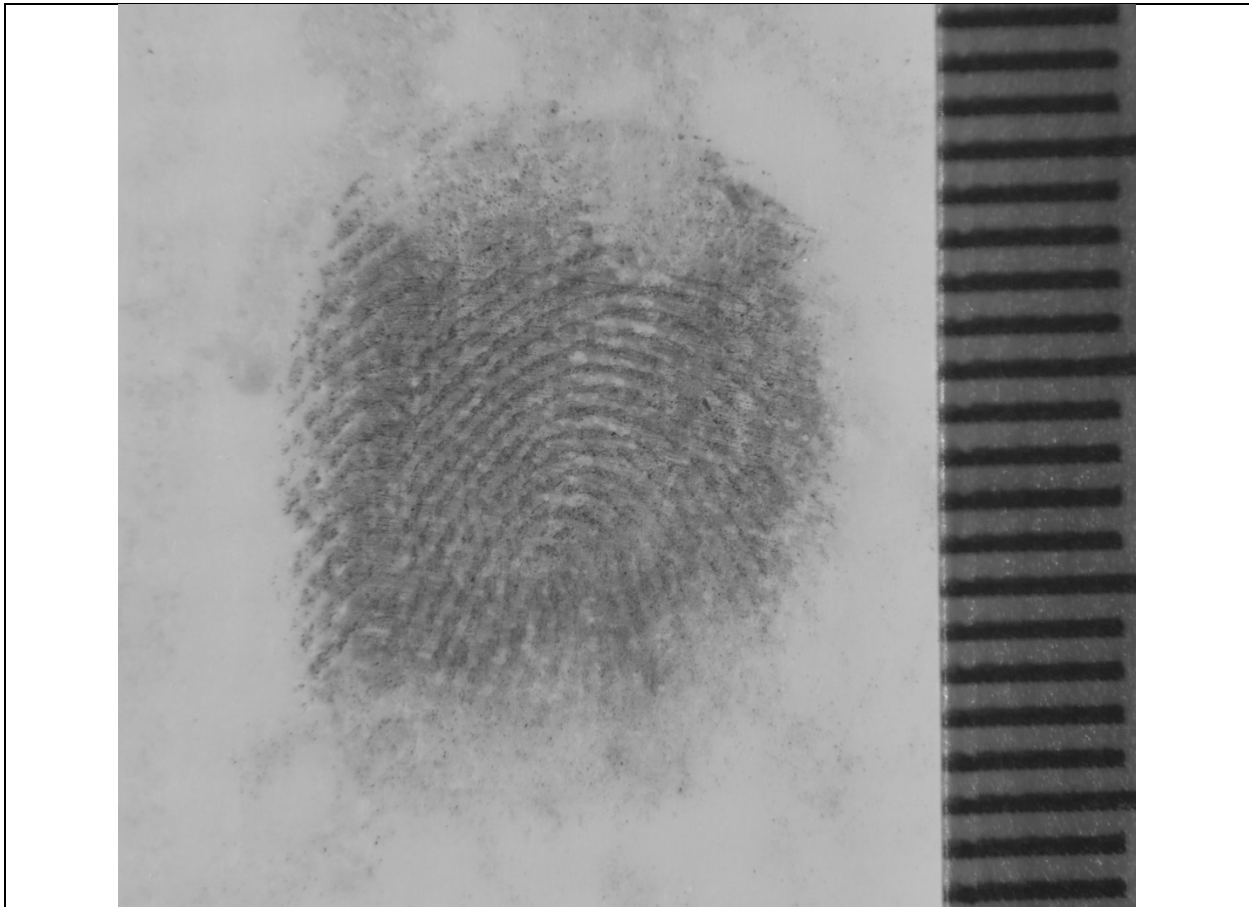


*See Digital Image for Analysis Purposes if Needed*

1. Overall Latent Difficulty Level  
 Low       Medium       Hard
2. Latent Complexity Assessment  
 1 (highly complex)       2 (moderately complex)       3 (neutral complexity)  
 4 (moderately non-complex)       5 (non-complex)
3. Type of Distortion Observed (**choose one, the most appropriate**)  
 Right Twist       Upward Movement       Double Tap       Double Touch  
 Left Twist       Left Movement       Right Movement       Downward Movement  
 Wobble       Development Medium       Background Noise       Unknown
4. What level of pressure is observed  
 Heavy Pressure       Medium Pressure       Light Pressure
5. Is this latent print reminiscent of casework (if you are an LPE)  
 Yes       No       N/A – not an LPE  
 Explain \_\_\_\_\_
6. Would this latent print trigger additional quality control measures in your agency  
 Yes       No       N/A – not an LPE  
 Why \_\_\_\_\_
7. Is this latent print suitable for the following  
 Preservation on evidence       Progressing to analysis phase       Comparison  
 Unknown (not examiner) \_\_\_\_\_

Participant #	
For Researchers Only	

P10

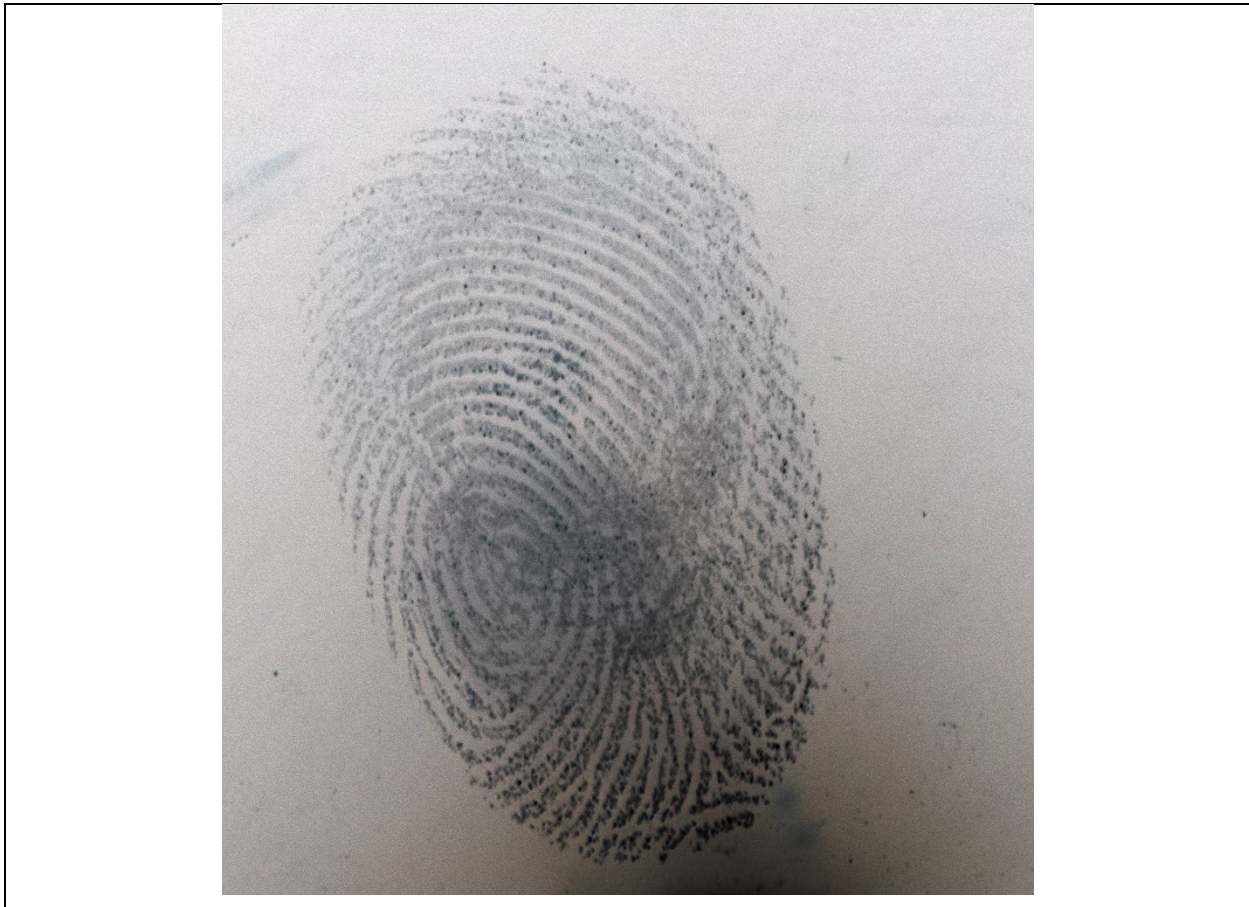


*See Digital Image for Analysis Purposes if Needed*

1. Overall Latent Difficulty Level  
 Low       Medium       Hard
2. Latent Complexity Assessment  
 1 (highly complex)       2 (moderately complex)       3 (neutral complexity)  
 4 (moderately non-complex)       5 (non-complex)
3. Type of Distortion Observed (**choose one, the most appropriate**)  
 Right Twist       Upward Movement       Double Tap       Double Touch  
 Left Twist       Left Movement       Right Movement       Downward Movement  
 Wobble       Development Medium       Background Noise       Unknown
4. What level of pressure is observed  
 Heavy Pressure       Medium Pressure       Light Pressure
5. Is this latent print reminiscent of casework (if you are an LPE)  
 Yes       No       N/A – not an LPE  
 Explain \_\_\_\_\_
6. Would this latent print trigger additional quality control measures in your agency  
 Yes       No       N/A – not an LPE  
 Why \_\_\_\_\_
7. Is this latent print suitable for the following  
 Preservation on evidence       Progressing to analysis phase       Comparison  
 Unknown (not examiner) \_\_\_\_\_

Participant #	
For Researchers Only	

P11

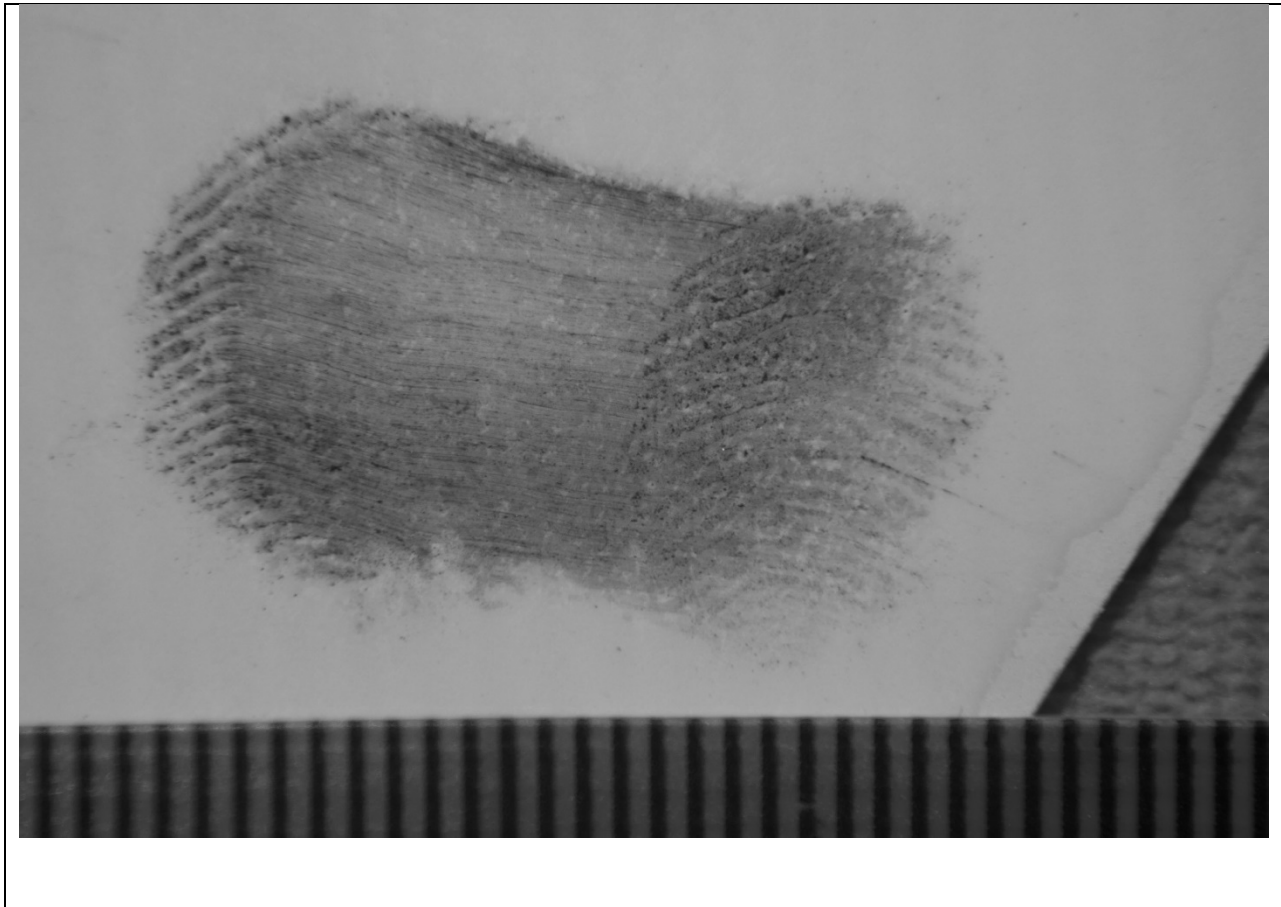


*See Digital Image for Analysis Purposes if Needed*

1. Overall Latent Difficulty Level  
 Low       Medium       Hard
2. Latent Complexity Assessment  
 1 (highly complex)       2 (moderately complex)       3 (neutral complexity)  
 4 (moderately non-complex)       5 (non-complex)
3. Type of Distortion Observed (**choose one, the most appropriate**)  
 Right Twist       Upward Movement       Double Tap       Double Touch  
 Left Twist       Left Movement       Right Movement       Downward Movement  
 Wobble       Development Medium       Background Noise       Unknown
4. What level of pressure is observed  
 Heavy Pressure       Medium Pressure       Light Pressure
5. Is this latent print reminiscent of casework (if you are an LPE)  
 Yes       No       N/A – not an LPE  
 Explain \_\_\_\_\_
6. Would this latent print trigger additional quality control measures in your agency  
 Yes       No       N/A – not an LPE  
 Why \_\_\_\_\_
7. Is this latent print suitable for the following  
 Preservation on evidence       Progressing to analysis phase       Comparison  
 Unknown (not examiner) \_\_\_\_\_

Participant #	
For Researchers Only	

P12



*See Digital Image for Analysis Purposes if Needed*

- Overall Latent Difficulty Level  
 Low       Medium       Hard
- Latent Complexity Assessment  
 1 (highly complex)       2 (moderately complex)       3 (neutral complexity)  
 4 (moderately non-complex)       5 (non-complex)
- Type of Distortion Observed (**choose one, the most appropriate**)  
 Right Twist       Upward Movement       Double Tap       Double Touch  
 Left Twist       Left Movement       Right Movement       Downward Movement  
 Wobble       Development Medium       Background Noise       Unknown
- What level of pressure is observed  
 Heavy Pressure       Medium Pressure       Light Pressure
- Is this latent print reminiscent of casework (if you are an LPE)  
 Yes       No       N/A – not an LPE  
 Explain \_\_\_\_\_
- Would this latent print trigger additional quality control measures in your agency  
 Yes       No       N/A – not an LPE  
 Why \_\_\_\_\_
- Is this latent print suitable for the following  
 Preservation on evidence       Progressing to analysis phase       Comparison  
 Unknown (not examiner) \_\_\_\_\_

Participant #	
For Researchers Only	

P13



*See Digital Image for Analysis Purposes if Needed*

1. Overall Latent Difficulty Level  
 Low       Medium       Hard
2. Latent Complexity Assessment  
 1 (highly complex)       2 (moderately complex)       3 (neutral complexity)  
 4 (moderately non-complex)       5 (non-complex)
3. Type of Distortion Observed (**choose one, the most appropriate**)  
 Right Twist       Upward Movement       Double Tap       Double Touch  
 Left Twist       Left Movement       Right Movement       Downward Movement  
 Wobble       Development Medium       Background Noise       Unknown
4. What level of pressure is observed  
 Heavy Pressure       Medium Pressure       Light Pressure
5. Is this latent print reminiscent of casework (if you are an LPE)  
 Yes       No       N/A – not an LPE  
 Explain \_\_\_\_\_
6. Would this latent print trigger additional quality control measures in your agency  
 Yes       No       N/A – not an LPE  
 Why \_\_\_\_\_
7. Is this latent print suitable for the following  
 Preservation on evidence       Progressing to analysis phase       Comparison  
 Unknown (not examiner) \_\_\_\_\_

Participant #	
For Researchers Only	

P14



*See Digital Image for Analysis Purposes if Needed*

- Overall Latent Difficulty Level  
 Low       Medium       Hard
- Latent Complexity Assessment  
 1 (highly complex)       2 (moderately complex)       3 (neutral complexity)  
 4 (moderately non-complex)       5 (non-complex)
- Type of Distortion Observed (**choose one, the most appropriate**)  
 Right Twist       Upward Movement       Double Tap       Double Touch  
 Left Twist       Left Movement       Right Movement       Downward Movement  
 Wobble       Development Medium       Background Noise       Unknown
- What level of pressure is observed  
 Heavy Pressure       Medium Pressure       Light Pressure
- Is this latent print reminiscent of casework (if you are an LPE)  
 Yes       No       N/A – not an LPE  
Explain \_\_\_\_\_
- Would this latent print trigger additional quality control measures in your agency  
 Yes       No       N/A – not an LPE  
Why \_\_\_\_\_
- Is this latent print suitable for the following  
 Preservation on evidence       Progressing to analysis phase       Comparison  
 Unknown (not examiner) \_\_\_\_\_

Participant #	
For Researchers Only	

P15



*See Digital Image for Analysis Purposes if Needed*

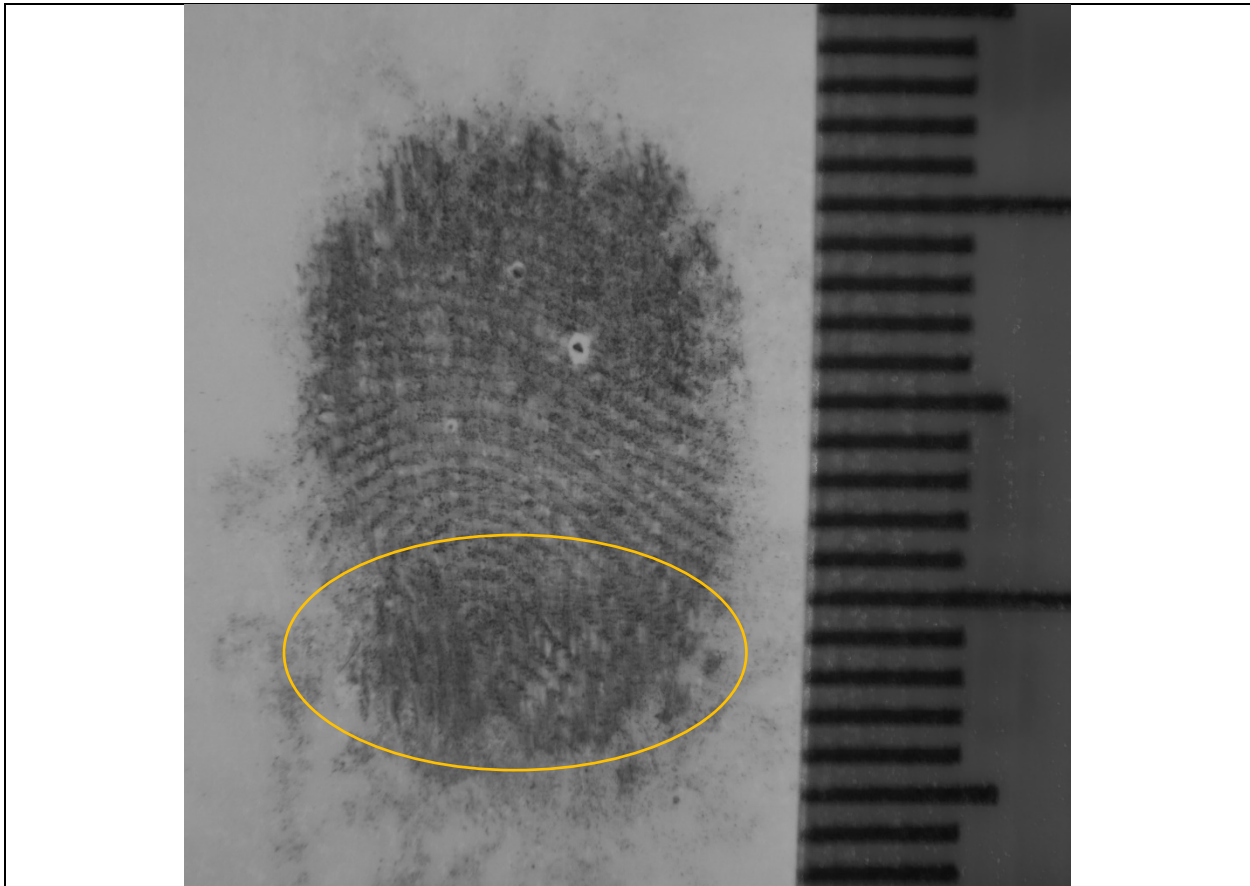
1. Overall Latent Difficulty Level  
 Low       Medium       Hard
2. Latent Complexity Assessment  
 1 (highly complex)       2 (moderately complex)       3 (neutral complexity)  
 4 (moderately non-complex)       5 (non-complex)
3. Type of Distortion Observed (**choose one, the most appropriate**)  
 Right Twist       Upward Movement       Double Tap       Double Touch  
 Left Twist       Left Movement       Right Movement       Downward Movement  
 Wobble       Development Medium       Background Noise       Fault Line  
 Scar       Substrate       Skin Condition       Unknown

4.

Explain How Distortion Factor(s) Could Produce This Appearance (**circled above**)

Participant #	
For Researchers Only	

P16



*See Digital Image for Analysis Purposes if Needed*

1. Overall Latent Difficulty Level  
 Low       Medium       Hard
2. Latent Complexity Assessment  
 1 (highly complex)       2 (moderately complex)       3 (neutral complexity)  
 4 (moderately non-complex)       5 (non-complex)
3. Type of Distortion Observed (**choose one, the most appropriate**)  
 Right Twist       Upward Movement       Double Tap       Double Touch  
 Left Twist       Left Movement       Right Movement       Downward Movement  
 Wobble       Development Medium       Background Noise       Fault Line  
 Scar       Substrate       Skin Condition       Unknown

4.

Explain How Distortion Factor(s) Could Produce This Appearance (**circled above**)

Participant #	
For Researchers Only	

P17



*See Digital Image for Analysis Purposes if Needed*

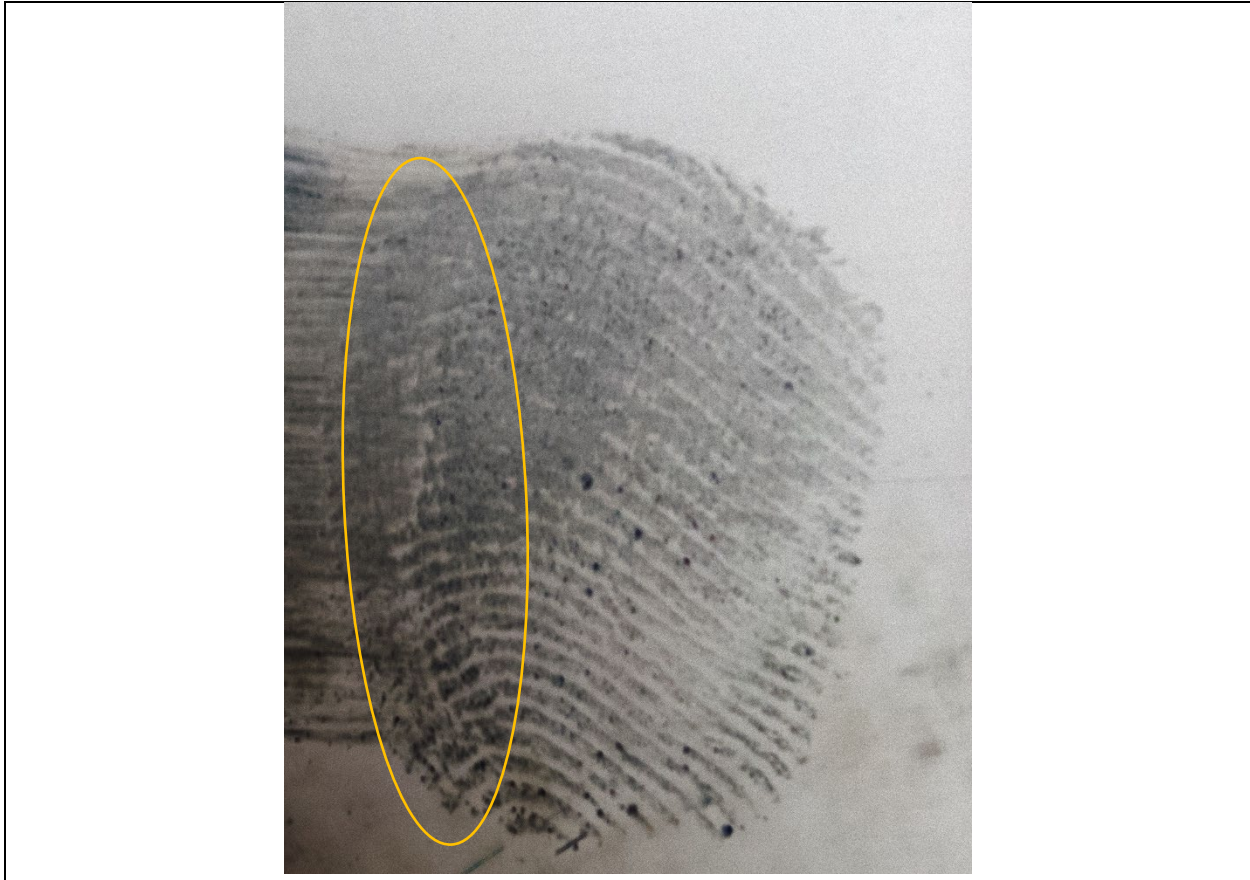
1. Overall Latent Difficulty Level  
 Low       Medium       Hard
2. Latent Complexity Assessment  
 1 (highly complex)       2 (moderately complex)       3 (neutral complexity)  
 4 (moderately non-complex)       5 (non-complex)
3. Type of Distortion Observed (**choose one, the most appropriate**)  
 Right Twist       Upward Movement       Double Tap       Double Touch  
 Left Twist       Left Movement       Right Movement       Downward Movement  
 Wobble       Development Medium       Background Noise       Fault Line  
 Scar       Substrate       Skin Condition       Unknown

4.

Explain How Distortion Factor(s) Could Produce This Appearance (**circled above**)

Participant #	
For Researchers Only	

P18



*See Digital Image for Analysis Purposes if Needed*

1. Overall Latent Difficulty Level  
 Low       Medium       Hard
2. Latent Complexity Assessment  
 1 (highly complex)       2 (moderately complex)       3 (neutral complexity)  
 4 (moderately non-complex)       5 (non-complex)
3. Type of Distortion Observed (**choose one, the most appropriate**)  
 Right Twist       Upward Movement       Double Tap       Double Touch  
 Left Twist       Left Movement       Right Movement       Downward Movement  
 Wobble       Development Medium       Background Noise       Fault Line  
 Scar       Substrate       Skin Condition       Unknown

4.

Explain How Distortion Factor(s) Could Produce This Appearance ( <b>circled above</b> )

Participant #	
For Researchers Only	

P19



*See Digital Image for Analysis Purposes if Needed*

1. Overall Latent Difficulty Level

- Low       Medium       Hard

2. Latent Complexity Assessment

- 1 (highly complex)       2 (moderately complex)       3 (neutral complexity)  
 4 (moderately non-complex)       5 (non-complex)

3. Type of Distortion Observed (**choose one, the most appropriate**)

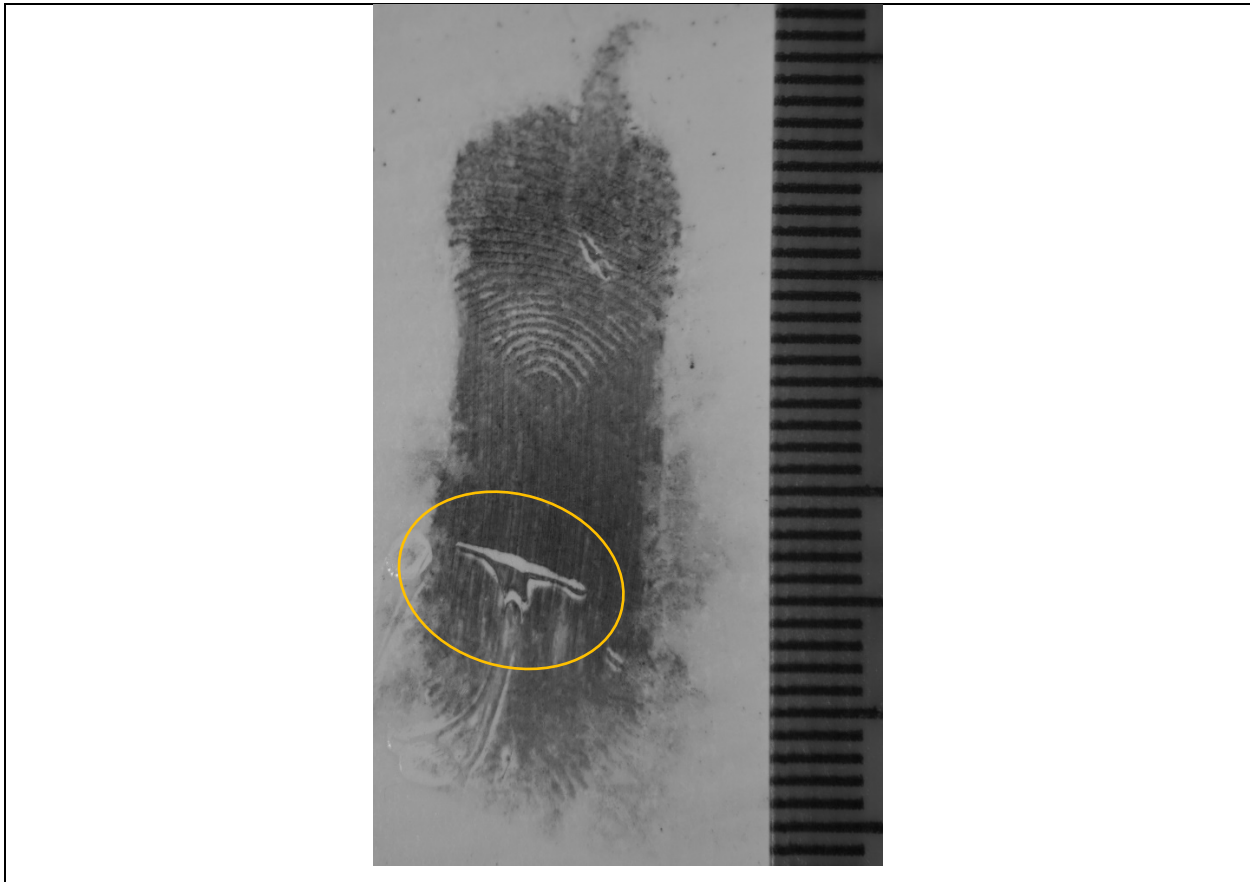
- Right Twist       Upward Movement       Double Tap       Double Touch  
 Left Twist       Left Movement       Right Movement       Downward Movement  
 Wobble       Development Medium       Background Noise       Fault Line  
 Scar       Substrate       Skin Condition       Unknown

4.

Explain How Distortion Factor(s) Could Produce This Appearance (**circled above**)

Participant #	
For Researchers Only	

P20



*See Digital Image for Analysis Purposes if Needed*

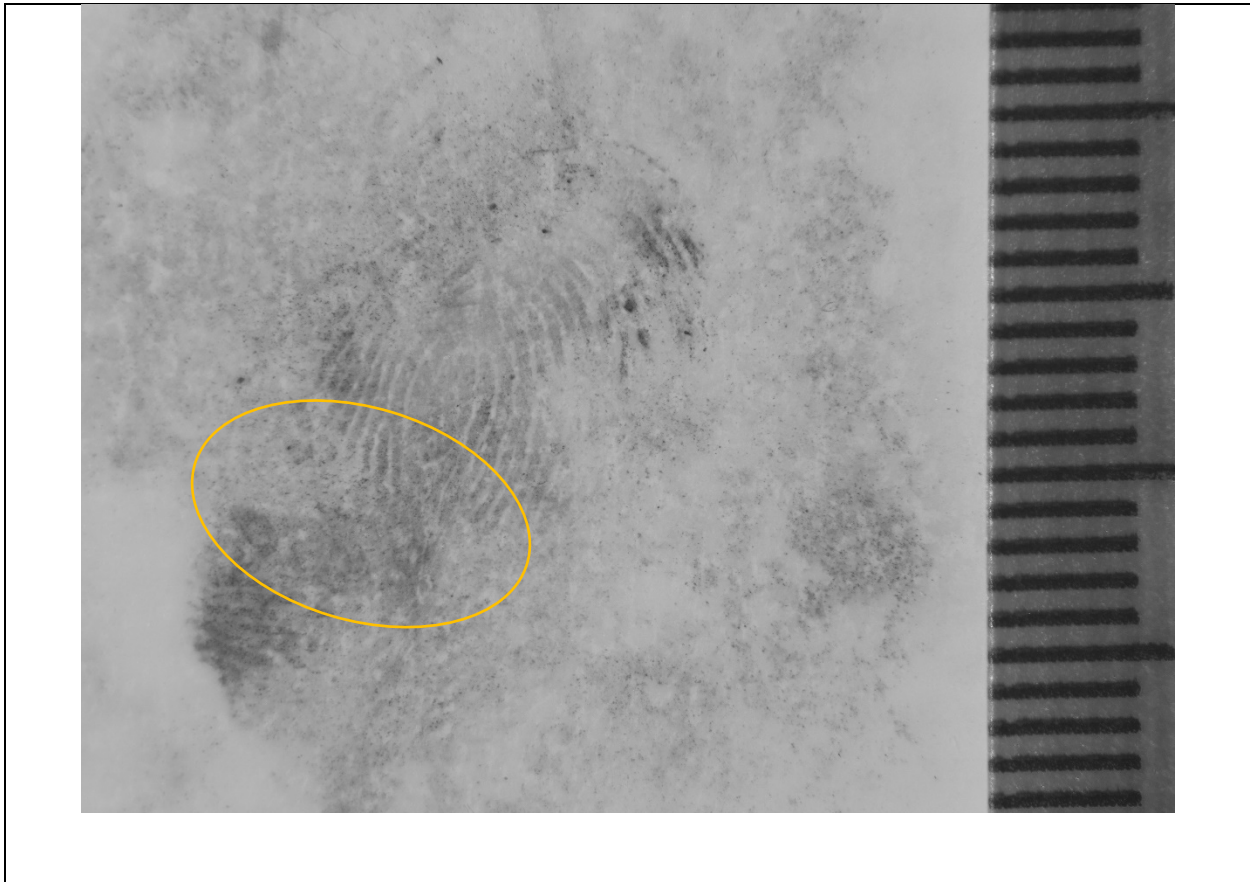
1. Overall Latent Difficulty Level  
 Low       Medium       Hard
2. Latent Complexity Assessment  
 1 (highly complex)       2 (moderately complex)       3 (neutral complexity)  
 4 (moderately non-complex)       5 (non-complex)
3. Type of Distortion Observed (**choose one, the most appropriate**)  
 Right Twist       Upward Movement       Double Tap       Double Touch  
 Left Twist       Left Movement       Right Movement       Downward Movement  
 Wobble       Development Medium       Background Noise       Fault Line  
 Scar       Substrate       Skin Condition       Unknown

4.

Explain How Distortion Factor(s) Could Produce This Appearance ( <b>circled above</b> )

Participant #	
For Researchers Only	

P21



*See Digital Image for Analysis Purposes if Needed*

1. Overall Latent Difficulty Level

- Low       Medium       Hard

2. Latent Complexity Assessment

- 1 (highly complex)       2 (moderately complex)       3 (neutral complexity)  
 4 (moderately non-complex)       5 (non-complex)

3. Type of Distortion Observed (**choose one, the most appropriate**)

- Right Twist       Upward Movement       Double Tap       Double Touch  
 Left Twist       Left Movement       Right Movement       Downward Movement  
 Wobble       Development Medium       Background Noise       Fault Line  
 Scar       Substrate       Skin Condition       Unknown

4.

Explain How Distortion Factor(s) Could Produce This Appearance (**circled above**)